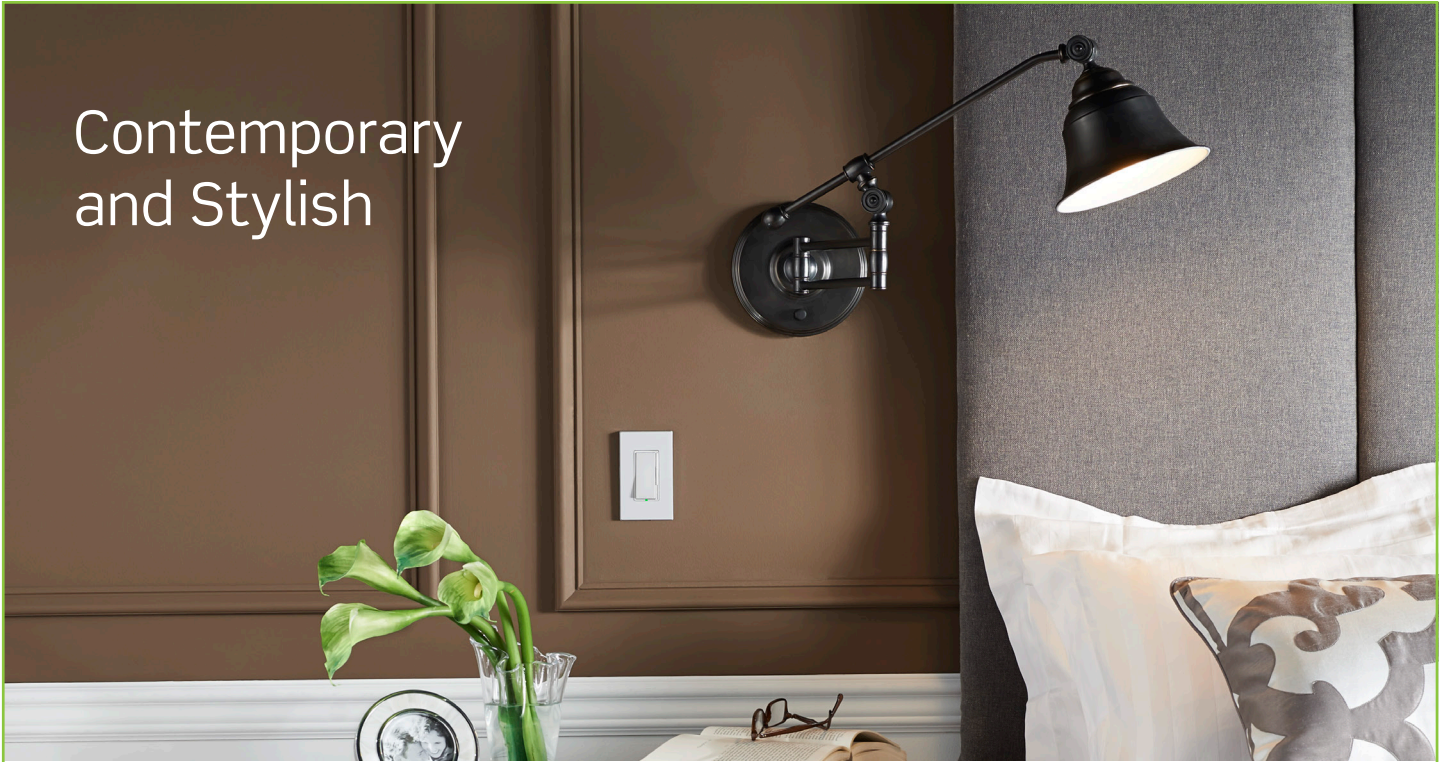


Contemporary and Stylish



Applications

Leviton Decora Slide Dimmers provide smooth, slide-action, full-range dimming for incandescent, dimmable LEDs, dimmable CFLs, halogen, magnetic low voltage (MLV), electronic low voltage (ELV) and fluorescent loads. The line also includes a fan speed control and an antimicrobial treated dimmer.

Decora Slide Controls are designed for both single pole (one location) and 3-way (two location) applications. They feature a Decora rocker switch that provides preset ON/OFF switching and a smooth, integrated slide bar for fine adjustment of lighting levels. Color change faceplates simplify inventory by reducing the need for stocking separate devices in every color.



Features and Benefits

- Decora switch with slender dimmer control slide bar
- Integrated linear full-range slide control for easy, precise operation
- Separate ON/OFF switch that preserves the selected brightness setting
- Optional locator light
- Provides single pole (one location) or 3-way (two location) lighting control when paired with a 3-way switch
- Comes packaged in White with Ivory and Light Almond faceplates
- Additional faceplate colors are available
- Slim, compact housing fits easily into a standard wallbox
- Suitable for multi-gang installations with other Decora products
- No fins for multi-gang installation
- Built-in radio/TV interference filter

LED/CFL/Incandescent/Halogen Dimmers

- DSL06 and DSM10 designed for optimal control of dimmable LED bulbs
- DSM10 also compatible with Magnetic Low Voltage bulbs
- Wider dimming range with LED bulbs than conventional incandescent dimmers
- DSL06-2A has an antimicrobial additive that helps inhibit 99% of mold, mildew, fungi and odor causing bacteria growth on the surface of the device between normal cleanings
- Customize the dimming range of LED bulbs using the minimum/maximum light level adjustment switch to help eliminate flicker, maximize energy savings, and optimize ambiance

0-10V LED/Mark 7® Fluorescent Dimmer

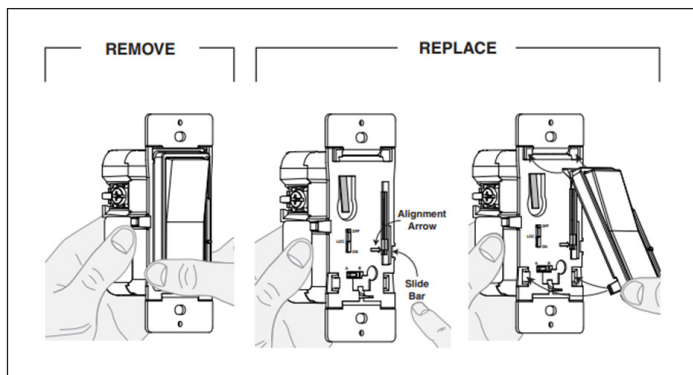
- DS710 designed for use with LED fixtures using 0-10V power supplies
- Dual voltage 120V/277V; 50mA maximum sink current
- No power pack required for switching

Quiet Fan Speed Control

- 1.5 Amps quiet fan speed control
- Combines a Decora ON/OFF switch with slider for the selection of low, medium or high fan speeds
- Ideal for libraries, home offices, bedrooms and any area where ceiling fan noise could become distracting

Decora Slide Color Change

Simple color change by removing faceplate and snapping on new color.



Typical Specifications

Operating Temperature Range 0°C to 55°C
Storage Temperature Range -10°C to 85°C
Relative Humidity 20% to 90% Non-Condensing

Agency Standards and Compliance

Dimmers

- cCSAus Certified to Standard 184.1
- Complies with UL 1472
- NOM
- NEMA SSL 7A Compliant (DSL06, DSM10, DSE06, DS710)
- California Title 24 Compliant (DSL06, DSM10, DSE06, DS710)

Fan Speed Control

- cCSAus Certified to C22.2 No. 156
- Complies with UL 1917
- NOM

Warranty Information

Five-Year Limited Warranty

Installation Considerations

Note: Sharing a neutral wire may cause flickering. Connect all devices to the same phase or run a separate neutral to each phase. Consult Leviton Tech Line if problems persist.

Warning: To avoid fire, shock or death when retrofitting Mark 10® Powerline dimming ballasts into fixtures that originally had Instant Start ballasts, the sockets MUST be replaced with Rapid Start sockets to allow proper dimmer operation and prevent property damage, injury or death. Refer to the instructions provided with the ballast and the Leviton dimmer.

DSL06, DSM10 and DSE06: LED and CFL bulbs marked or rated as dimmable can be used with this. For a complete list of approved LED lamps visit www.leviton.com/LED

Use Leviton Power Extenders to extend the load capacity of box mounted dimmers. Leviton Power Extenders are available for incandescent, magnetic low voltage, electronic low voltage, Mark 10 Powerline fluorescent dimming ballasts or equivalents and 0-10 VDC dimmable fluorescent ballasts such as Mark 7 0-10V, OSRAM Sylvania Quicktronic® Helios™ or equivalent ballasts.

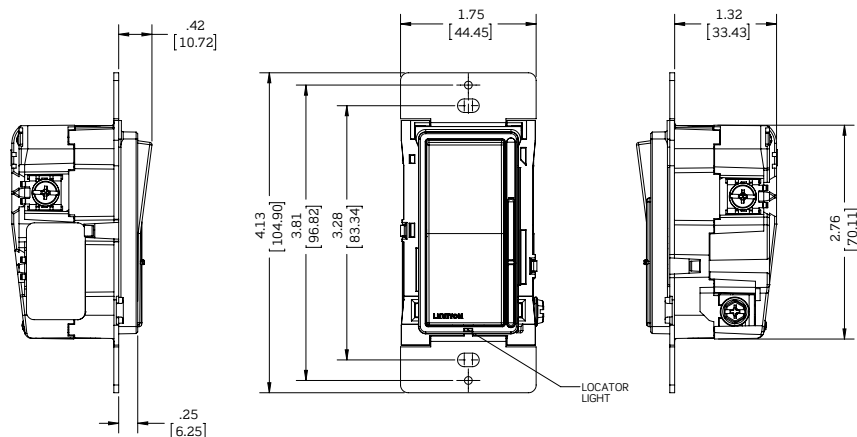
Mode Switch



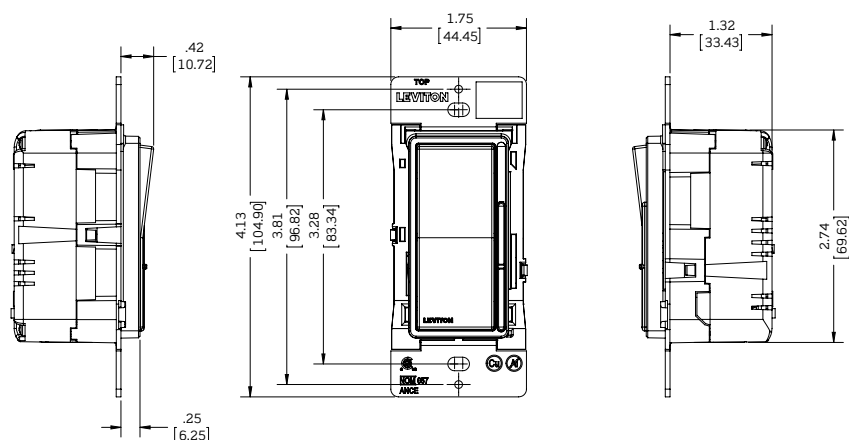
- Cat Nos. DSL06 and DSM10 feature the Mode Switch, which is pre-set at the factory to Mode A.
- For applications where bulbs do not turn on smoothly or exhibit inconsistent performance when turning on, set the Mode Switch to B.
- The Mode Switch can also be used to enter the program mode to adjust the minimum or maximum dimming level.

Dimensional Drawings

Cat. No. DSL06



Cat. No. DSM10*, DSF01, DSE06, DS710, DSX10, DSH06 & DSH08



* has a locator light

Specifications At-A-Glance

	DSL06	DSM10	DSF01	DSE06	DS710	DSX10	DSX12	DSH08-1	DSH06-7
Voltage, Frequency									
120VAC-60Hz	Yes	Yes	Yes	Yes	Yes	Yes	-	Yes	-
277VAC-60Hz	-	-	-	-	Yes	-	Yes	-	Yes
Load Rating									
Incandescent/Halogen	600W	1000W	-	-	-	-	-	-	-
LED/CFL	300W	450W	-	300W	-	-	-	-	-
MLV	-	1000VA	-	-	-	-	-	-	-
ELV	-	-	-	600VA	-	-	-	-	-
Fluorescent	-	-	-	-	1200VA 1500VA	1000VA	1200VA	8A	6A
Motor	-	-	1.5A	-	-	-	-	-	-
Mechanical									
Neutral Required	No	No	No	Yes	No	No	No	Yes	Yes
Single Pole/3-Way	Yes	Yes	Yes	Yes	Yes	Yes	Yes	Yes	Yes
Locator Light	Yes	Yes	No	No	No	No	No	No	No

Maximum Load for Multi-Gang Applications

In multi-gang applications derating may be required in accordance with the following chart.

Cat. No.	Single	2-Gang	3-Gang or more
DSL06	300W (2.5A) LED/CFL 600W Incandescent/Halogen	300W (2.5A) LED/CFL 500W Incandescent/Halogen	300W (2.5A) LED/CFL 500W Incandescent/Halogen
DSM10	1000VA MLV 450W (3.75A) LED/CFL 1000W Incandescent/Halogen	800VA MLV 450W (3.75A) LED/CFL 800W Incandescent/Halogen	700VA MLV 450W (3.75A) LED/CFL 700W Incandescent/Halogen
DSE06	480W (4A)	480W (4A)	480W (4A)
DS710 (120V)	960W	960W	960W
DS710 (277V)	1200W	1200W	1200W
DSX10	800W	800W	800W
DSX12	960W	960W	960W
DSH06-7	6A	6A	6A
DSH08-1	8A	8A	8A
DSF01	1.5A	1.5A	1.5A

Ordering Information

All Decora Slide Controls provide single pole or 3-way control when used with a 3-way switch.
120VAC unless otherwise specified in rating.

Description	Rating	Cat. No.	Color
LED/CFL/Incandescent/Halogen Dimmer with locator light	300W LED/CFL 600W Incandescent/Halogen	DSL06-1L	Z
Antimicrobial Treated LED/CFL/Incandescent/Halogen Dimmer with LED locator	300W LED/CFL 600W Incandescent/Halogen	DSL06-2A	W
Magnetic Low Voltage Dimmer with locator light	1000W MLV 450W LED/CFL 1000W Incandescent/Halogen	DSM10-1L	Z
Electronic Low Voltage Dimmer, No locator light, neutral required	600VA ELV 300VA LED/CFL	DSE06-10	Z
Mark 7 [®] Fluorescent ballast and LED Power Supply 0-10V Dimmers, No locator light	1200VA @ 120VAC 1500VA @ 277VAC	DS710-10	Z
Mark 10 [®] Powerline Fluorescent Dimmer, No locator light	1000VA @ 120VAC	DSX10-10	Z
Mark 10 [®] Powerline Fluorescent Dimmer, No locator light	1200VA @ 277VAC	DSX12-70	Z
Fluorescent Dimmer for Hi-Lume [®] or Eco-10 [®] type ballasts, No locator light	6A @ 277VAC	DSH06-70	Z
Fluorescent Dimmer for Hi-Lume [®] or Eco-10 [®] type ballasts, No locator light	8A @ 120VAC	DSH08-10	Z
Quiet Fan Speed Control	1.5A	DSF01-10	Z

Color Change Faceplates

Description	Cat. No.	Color
Faceplates for DSL06, DSM10, LED locator light in frame	DSKIT-00	W, I, T, G, E, B, R
Faceplates for DSE06, DS710, DSX10, DSX12, DSH06, DSH08 and DSF01, no LED locator light	DSKIT-0N	W, I, T, G, E, B, R

Decora Slide comes packaged with three colors. Products with suffix (-Z) include White, with Ivory and Light Almond faceplates. Color Change faceplates are available in the following colors: White (-W), Ivory (-I), Light Almond (-T), Gray (-G), Black (-E), Brown (-B) and Red (-R).



Leviton Manufacturing Co., Inc.

Tech Line: 1-800-824-3005

Mon-Fri 8am-10pm EST, Saturday 9am-7pm EST, Sunday 9am-5pm EST

For 24/7 product support visit www.leviton.com/support

Visit our Website at: www.leviton.com/dimmers

© 2025 Leviton Manufacturing Co., Inc. All rights reserved. All trademarks are the property of their respective owners.

