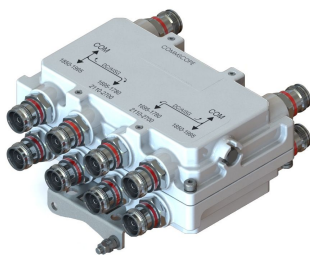


# SDX1926Q-43 | E14F05P86



## Ultra Compact Quad-pack Diplexer PCS/AWS+WCS+BRS, DC AWS/WCS /BRS, 4.3-10

- Quad configuration, 4x4 MIMO ready
- Ideal for small cell applications
- BTS-to-feeder and feeder-to-antenna application
- DC/AISG pass on 1695-1780/2110-2700 MHz
- New 4.3-10 connectors for improved PIM performance and size reduction
- Industry leading PIM performance

### Product Classification

**Product Type** Diplexer

### General Specifications

**Color** Gray

**Common Port Label** COMMON

**Modularity** 4-Quad

**RF Connector Interface** 4.3-10 Female

**RF Connector Interface Body Style** Long neck

### Dimensions

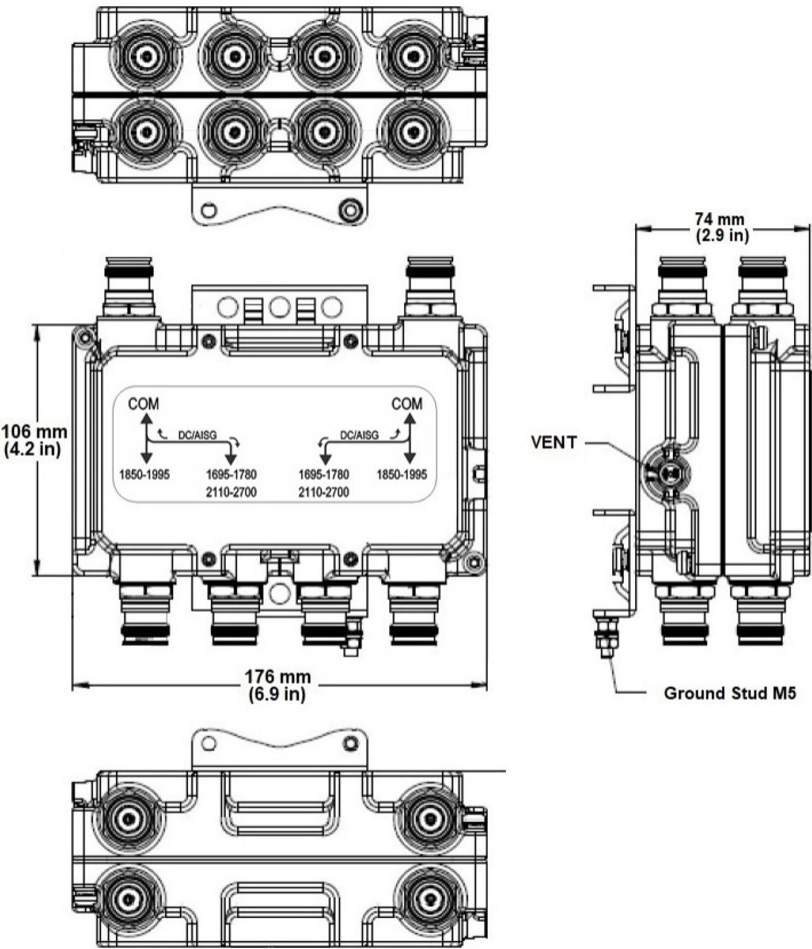
**Height** 106 mm | 4.173 in

**Width** 176 mm | 6.929 in

**Depth** 74 mm | 2.913 in

### Outline Drawing

# SDX1926Q-43 | E14F05P86



## Electrical Specifications

Impedance	50 ohm
License Band, Band Pass	AWS 1700   IMT 2600   PCS 1900   TDD 1900   TDD 2300   TDD 2600   WCS 2300

## Electrical Specifications, dc Power/Alarm

dc/ISG Pass-through Method	Factory set
dc/ISG Pass-through Path	Branch 2
dc/ISG Pass-through, combiner	Branch 2
dc/ISG Pass-through, demultiplexer	Branch 2
Lightning Surge Current	5 kA
Lightning Surge Current Waveform	8/20 waveform

# SDX1926Q-43 | E14F05P86

Voltage	7–30 Vdc
Electrical Specifications, AISG	
AISG Carrier	2.176 MHz ± 100 ppm

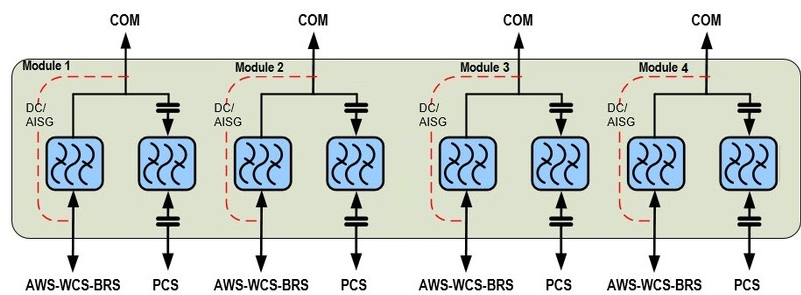
## Electrical Specifications

Sub-module	1   2	1   2
Branch	1	2
Port Designation	PCS	AWS-WCS-BRS
License Band	PCS 1900, Band Pass	WCS 2300, Band Pass AWS 1700, Band Pass TDD 2600, Band Pass IMT 2600, Band Pass

## Electrical Specifications, Band Pass

Frequency Range, MHz	1850-1995	1695–1780 2110–2700
Insertion Loss, typical, dB	0.2	0.15
Total Group Delay, maximum, ns	15	15
Return Loss, typical, dB	22	22
Isolation, typical, dB	42	42
Input Power, RMS, maximum, W	100	100
Input Power, PEP, maximum, W	1500	1500
3rd Order PIM, minimum, dBc	-161	-161
3rd Order PIM Test Method	2 x 20 W CW tones	2 x 20 W CW tones

## Block Diagram



## Mechanical Specifications

Wind Loading at Velocity, frontal	26.0 N @ 150 km/h
Wind Loading at Velocity, lateral	8.0 N @ 150 km/h

### Environmental Specifications

Operating Temperature	-40 °C to +65 °C (-40 °F to +149 °F)
Relative Humidity	Up to 100%
Corrosion Test Method	IEC 60068-2-11, 30 days
Ingress Protection Test Method	IEC 60529:2001, IP67

### Packaging and Weights

Mounting Hardware Weight	0.2 kg   0.441 lb
Volume	1.4 L
Weight, without mounting hardware	2.8 kg   6.173 lb

### Regulatory Compliance/Certifications

Agency	Classification
CHINA-ROHS	Above maximum concentration value
REACH-SVHC	Compliant as per SVHC revision on <a href="http://www.commscope.com/ProductCompliance">www.commscope.com/ProductCompliance</a>
ROHS	Compliant/Exempted

