

# UltraMAX™ Copper Connectivity System

## 5e, 6, 6A UTP Patch Panels | Regional Availability — Global



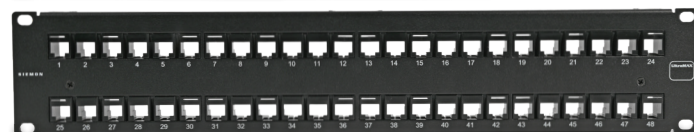
The Siemon UltraMAX copper connectivity system utilizes a single platform of innovative patch panels for your category 5e, 6 and 6A UTP requirements. The UltraMAX panels have been designed with our users in mind, maximizing functionality, aesthetics and industry-leading performance into a format that will allow you to configure your ideal system.



1U: 48-Port Flat Panel



1U: 24-Port Flat Panel



2U: 48-Port Flat Panel



1U: 48-Port Angled Panel



1U: 24-Port Angled Panel



2U: 48-Port Angled Panel

### Optimal Design

The UltraMAX patch panels have been designed with the installer in mind. Available in 24- and 48-port, angled and flat configurations, they allow users to easily optimize network layouts to best support their requirements.

### Durable Construction

Each UltraMAX patch panel is constructed from high strength steel with a scratch-resistant finish, providing a robust foundation for your critical network connections.



- 1 UltraMAX's diagonal, linear lacing block enhances performance with distinct pair-to-pair separation and simple outlet insertion/removal.



- 2 Easily identify and manage your port designations, whether using customized labels or color-coded icons, using UltraMAX's magnified label holder, which effortlessly snaps into place for a clean appearance.




- 3 UltraMAX patch panels are available with removable rear cable managers, allowing users to easily control their cabling and maintain optimum performance.



- 4 This option provides 48 ports in just 1U to decrease significant rack space utilization while still meeting strict Category 6A Alien Crosstalk Parameters.



 For information on our eco-friendly packaging, see the QR Code on page 2.

### Get Started

UltraMAX patch panels are available in various options, each designed to provide you with everything you need for your installation:

#### Loaded:

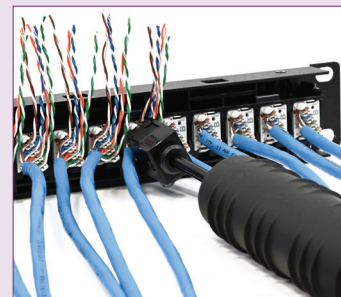
Patch panels arrive pre-loaded with outlets, ready to be terminated directly on the panel.

#### Kitted:

Patch panels come with the relevant outlets in the box, ready to be terminated wherever required.

#### Empty:

Patch panels are delivered empty and without outlets. Ideal when used with our pre-terminated copper trunks for ultra-fast deployments.



### Superior Termination

UltraMAX's unique design allows users to terminate all four pairs in one action using the systems 4-pair impact tool. This allows users to terminate their outlets 20% faster than traditional termination methods.

## MECHANICAL – PANEL

OPERATING TEMPERATURE	-10 to 60 °C (14 to 140 °F)
FLAMMABILITY RATING	UL 94 V-0
ECO-FRIENDLY FEATURES	RoHS, Lead-free, Halogen-free, PVC-free, Eco-friendly packaging
PLASTIC MATERIALS	Flame retardant thermoplastic
DIMENSIONS (L X W X H)	<b>24-Port Flat Panel w/Rear Manager, 1U:</b> 127mm (5") x 48mm (19") x 44mm (1.75") <b>*48-Port Flat Panel w/Rear Manager, 1U:</b> 127mm (5") x 48mm (19") x 44mm (1.75") <b>48-Port Flat Panel w/Rear Manager, 2U:</b> 127mm (5") x 48mm (19") x 89mm (3.5") <b>24-Port Angled Panel w/Rear Manager, 1U:</b> 256mm (10") x 48mm (19") x 44mm (1.75") <b>*48-Port Angled Panel w/Rear Manager, 1U:</b> 256mm (10") x 48mm (19") x 44mm (1.75") <b>48-Port Angled Panel w/Rear Manager, 2U:</b> 256mm (10") x 48mm (19") x 89mm (3.5")
MOUNTING CAPABILITY	CEA-310-E 482.6mm (19") rack
CONSTRUCTION MATERIAL	16 gauge cold rolled steel *18 gauge cold rolled steel Black powder coat

## COMPLIANCE

ISO/IEC 11801-1 Ed.1.0
IEC 60603-7-41
IEC 60512-99-002 (3 <sup>rd</sup> party verified)
ANSI/TIA-568.2-D
ANSI/TIA 1096-A
ETL Channel Tested
IEEE 802.3af (Type 1 PoE)
IEEE 802.3at (Type 2 PoE)
IEEE 802.3bt (Type 3 and 4 PoE)
Power over HDBaseT™ (PoH)
UL 1863



**SIEMON**  
SUSTAINABILITY  
PLEDGE



Siemon's **PowerGUARD** technology with a 75°C operating temperature improves heat dissipation for reduced length derating and bundling requirements in remote powering applications, including PoE and power over HDBaseT (PoH).

# Ordering Information

## UltraMAX Patch Panels

UP (X or XX) - (X) (X) - (XX) (X) - RS

PERFORMANCE CATEGORY	MOUNTING STYLE	RACK MOUNT SPACE	PORT COUNT	OUTLET CONFIGURATION
5 = 5e UTP 6 = 6 UTP 6A = 6A UTP N = Not Applicable*	F = Flat A = Angled	1 = 1U 2 = 2U	24 = 24-Port 48 = 48-Port**	E = Empty K = Kitted*** L = Loaded

\*Use "N" for all empty panel options.

\*\*48-port 1U panels are not compatible with UltraMAX 4-pair impact tool.

\*\*\*Kitted panels include the UltraMAX palm guard insert for outlet terminations.

**Note:** Siemon UltraMAX UTP panels are designed for use with UltraMAX panel outlets only.

All panels include one removable wire manager, cable ties and mounting hardware.

Empty: Patch Panel, Black, Empty



Kitted: Patch Panel, Black, Outlets kitted



Loaded: Patch Panel, Black, Outlets installed



Label Sheets



Label Holder



Panel Blank



Angled Panel Cover



1U 24-Port, 2U 48-Port  
Rear Cable Manager



1U 48-Port  
Rear Cable Manager



Palm Guard  
Insert

## UltraMAX Patch Panel Accessories

Part Number	Description
Z-PNL-PL24	Perforated label sheets for 24-port panels, which are blank on one side, and numbered 1 to 24 on the other. 7 sheets for up to 112 panels. Z-MAX®/UltraMAX compatible
Z-PNL-PL48	Perforated label sheets for 48-port panels, which are blank on one side, and numbered 1 to 48 on the other. 14 sheets for up to 112 panels. Z-MAX/UltraMAX compatible
Z-PNL-PS	Patch panel label holder, Bag of 25 (6-port wide), Z-MAX/UltraMAX compatible
Z-BL-01	Panel blank, Bag of 10, Black rubber, Fits in empty Z-MAX/UltraMAX panel opening as well as any RJ-45 port for dust protection
PNLA-CVR-01	Angled panel cover, Z-MAX/UltraMAX, Black
UP-RWM-A	UltraMAX 1U 24-port and 2U 48-port, rear cable manager
UP-RWM-B	UltraMAX 1U 48-port, rear cable manager

## UltraMAX Patch Panel Compatible Outlets | For use with empty UltraMAX patch panels only.

U (X or XX) - P00N (X)

PERFORMANCE CATEGORY	PACKAGE TYPE
5 = 5e UTP 6 = 6 UTP 6A = 6A UTP	S = Standard Pack B = Bulk Pack*

\*Eco-friendly bulk packs sold with MoQ of 100 and order increment of 100 outlets.



Siemon provides a variety of termination tools for UltraMAX patch panels. View our full offering [here](#).

For information on the complete line of UltraMAX outlets, click [here](#).

Because we continuously improve our products, Siemon reserves the right to change specifications and availability without prior notice.

**North America**  
P: (1) 860 945 4200

**Mexico**  
P: (521) 556 387 7708/09/10

**Latin America**  
P: (571) 657 1950/51/52

**Europe**  
P: (44) 0 1932 571771

**China**  
P: (86) 215385 0303

**India, Middle East & Africa**  
P: (971) 4 3689743

**Asia Pacific**  
P: (61) 2 8977 7500

**Siemon OEM Technologies**  
P: (1) 860 945 4213  
[www.siemon.com/OEM](http://www.siemon.com/OEM)

[www.siemon.com/ultramax](http://www.siemon.com/ultramax)

